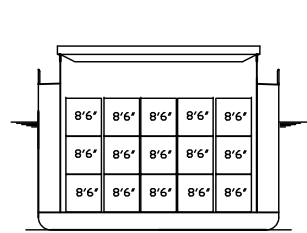
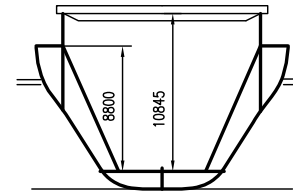
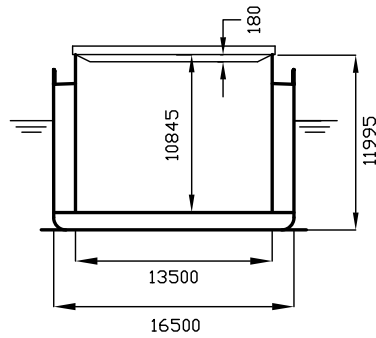


DEADWEIGHT GROUP

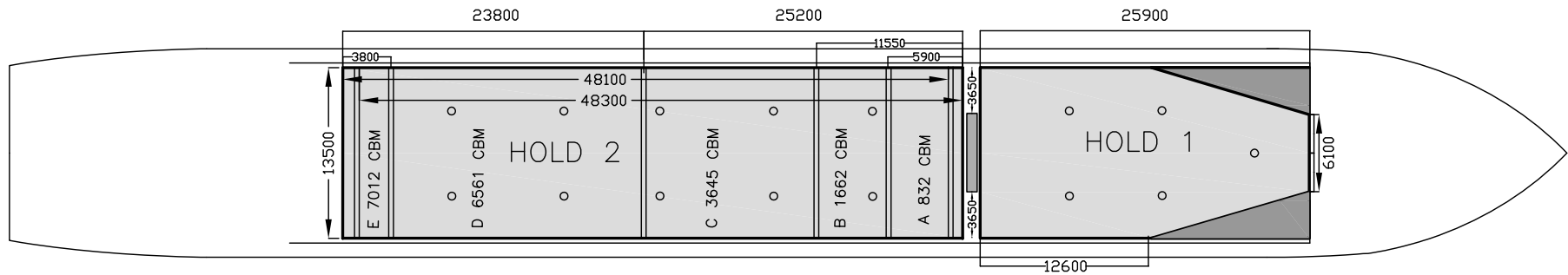
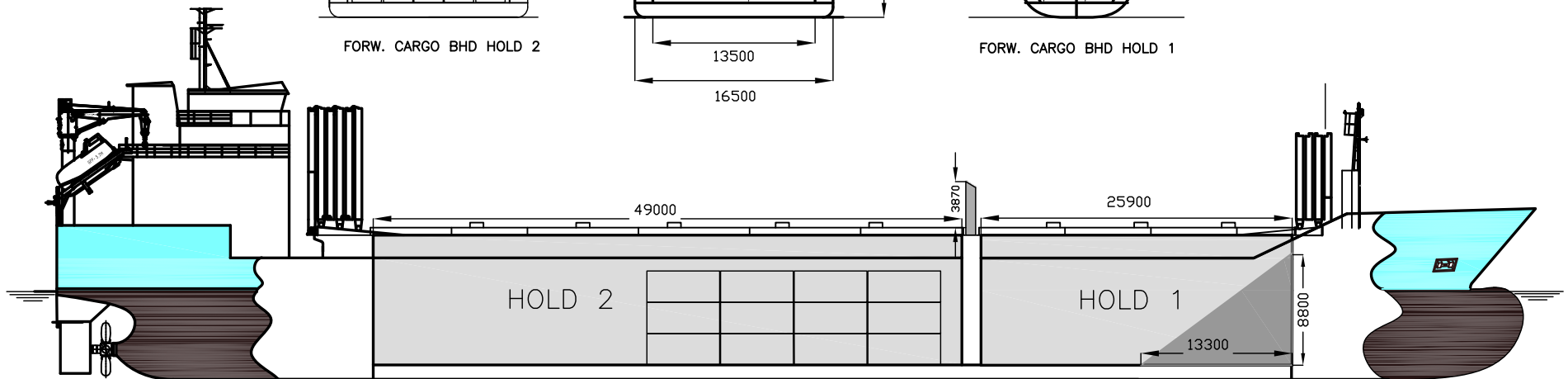
8300 dwt



FORW. CARGO BHD HOLD 2



FORW. CARGO BHD HOLD 1





# WILSON NANJING

If not otherwise specified :  
Dist/Dim in meters  
Weights in m.tons

All details given in good faith without guarantee

DWT GROUP 8000  
IMO NO 9431018  
CALL SIGN 9HA2627  
BUILD 01/2012  
FLAG Malta

**Builders** ..... CSC Yichang Shipyard, Yichang, China  
**Classification** ..... GL / 100 A5 E1 G BMW SOLAS-II-2 Req.19DBC +MC E1 AUT  
**Length oa** ..... 123.10  
**Breadth mld** ..... 16.50  
**Depth mld** ..... 10.00  
**Draft summer** ..... 7.40  
**Deadweight summer draft** ..... 8357  
**Draft winter** ..... 7.25  
**Deadweight winter draft** ..... 8090  
**Gross tonnage** ..... 6118  
**Net tonnage** ..... 2966  
**Immersion(load draft) TPC** ..... 17.65  
**Mean draft of ship in heavy ballast** ..... 4.40  
**Distance from forward end of No.1 Hatch to aft end of last hatch** ..... 75.94  
**Hatch type** ..... Mac Gregor Folding type  
**Container (TEU) capacity Hold / Deck** ..... 60 / -

**Max permissible load on deck, mt/sqm** ..... 3.50  
**Max permissible load on tanktop, mt/sqm** ..... 15.00  
**Max air draft - 1** ..... 28.23  
**Max air draft - 2** ..... -  
**Distance from keel to top antenna -1** ..... 32.32  
**Distance from keel to top antenna -2** ..... -  
**Water ballast capacity** ..... 2 880.30  
**Fuel main engine - capa.(cbm)** ..... 409.80  
**Fuel aux engine - capa.(cbm)** ..... 65.20  
**Speed service, knots** ..... 13.00  
**Cargo gear** ..... No  
**Bow thruster** ..... 450.kW . Yes  
**Boxed** ..... Yes  
**Double skin** ..... Yes  
**Open hatch** ..... Yes  
**Rhine fitted** ..... No  
**Ammonium Nitrate fitted** ..... Yes  
**FeSi fitted** ..... Yes

## Hatch details:

- a : Distance from waterline fully ballasted to top of hatch coamings  
b : Distance from waterline fully loaded to top of hatch coamings  
c : Distance from tank top to top of hatch coamings  
d : Max permissible loading on hatch covers  
e : Distance from ship's rail to inside hatch coamings  
f : Height of hatch coamings  
g : Hatch opening  
h : No. of Loadingholes on hatchcovers X diameter in mm

## Remarks :

- Hold 1 with sloping plates 13.3m forward (see drawing).  
Hold 2 boxed, one movable bulkhead in hold no. 2, four different positions + two parking positions. Bulkhead dim LxBxH 0.4m x 13.5m x 10.545m.  
Cubic capacity hold 2: 7050 cbm with bulkhead in fwd parking position, 7064 cbm with bulkhead in aft parking positions, 7101 cbm with bulkhead in working position. Cubic capacity hold 2 without bulkhead is 7174 cbm.  
Free space on hatch on each side of ventilation construction is 3.65 m sideways.  
Lashing points: 78 pcs in holds, 42 pcs fitted on main deck, 47 pcs fitted on hatch coaming stanchion.  
Vessel able to call NAABSA ports. Container sockets in forward part of hold 2 for 60 units 20' containers or 30 units 40' containers.  
\* Some areas of hatch covers are protruding downward 18 cm inside cargo hold.

Htch#	a b c d e f g							h	Hold#	Bale		Grain		Hold dimensions	Compartment :		Communication :		Equipment
										cbm	cbft	cbm	cbft		#	cbm	Type	No	
1	8.50	4.60	10.85	3.50	1.50	2.00	25.90 x 13.50	5 x 700mm	1	3620	127 840	3681	129 995	25.90 x 13.50 x 10.845 *			Tlph 1	+47 481 78 952	Gsm
2	7.50	4.60	10.85	3.50	1.50	2.00	49.70 x 13.50	10 x 700mm	2	6983	246 605	7101	250 772	49.00 x 13.50 x 10.845 *			Tlph 2		
																Fax			
																Email	w-nanjing@wilsonfleet.no		